

Tove Jansson
Akebono Children's Forest Park

This is the place where everybody
can feel comfortable.
You can enjoy refreshing forest breeze
and bright sunshine through foliage.

Tove Jansson Akebono Children's Forest Park has been loved
by generations of people since it was opened 20 years ago.
Did you know that it was the correspondence with Tove Jansson,
the world-famous Finnish children's writer,
that inspired the creation of this park?
You can feel the heart and soul of Tove Jansson throughout the park.
Children, adults, animals, flowers and plants all live in harmony.
The place to embrace such time is
Tove Jansson Akebono Children's Forest Park.



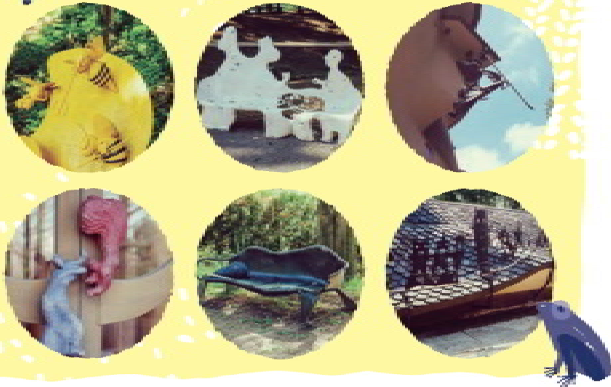
About Tove Jansson
TOVE JANSSON

Tove was born in Helsinki in 1914.
She is celebrated cartoonist, novelist and children's writer.
Tove is one of the greatest storytellers of Finland.
Her Moomin books are highly acclaimed all over the world.
She received numerous awards including Hans Christian
Andersen Awards.



Moomin Characters™

Come and look!
These interesting spots in the park.

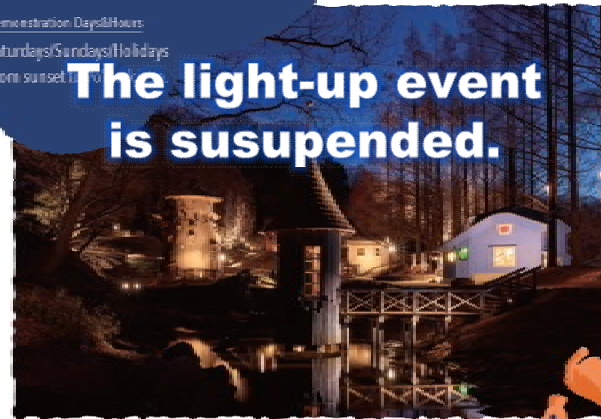


LEITING UP

A haze light in the forest dwelling
The time feeling
an abundant darkness

Demonstration Days/Hours
Saturdays/Sundays/Holidays
From sunset

The light-up event
is suspended.



© Moomin Characters™

Tove Jansson Akebono Children's Forest Park

Hours 9:00~17:00

Closure dates may vary by season. Please check the
park's official website.

893-1 Azu, Hanno City, Saitama Prefecture 357-0045

TEL 042-972-7711

MAIL akebono@city.hanno.lg.jp



Official Homepage

As the parking space is limited, occasionally it's difficult to park in crowded times.

TOVE JANSSON
AKEBONO
CHILDREN'S
FOREST PARK



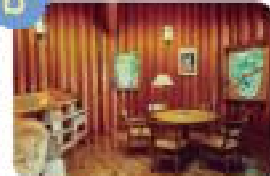
Meets!
Hanno

TOVE JANSSON AKEBONO CHILDREN'S FOREST PARK MAP



Mushroom House

As the name suggests, this building looks like a mushroom. Visitors are welcomed warmly as family members. The first floor serves the "get-together area" with the fireplace and the second floor offers a view of the mysterious spaces.



Forest House

The first floor is the Tove Jansson Museum. The second floor is the library where you can enjoy your favorite books. The undulating walls made of Mutsuwa-oki Japanese cypress logs, which is famous for the special product of Haverø is a landmark of this house.



Children's Theater Restrooms

This hall is used for concerts and events. It features interesting architectural details such as the dome-shaped roof made of 100-year-old Japanese cypress logs. Restrooms and the administration office are located underneath the hall which is a cave-like space with a splash of the pond water.



café Puisto

Puisto is the Finnish word for a park. At café puisto in this forest park, people can come close to nature and spend easy time in the Scandinavian ambience. The café with blue walls has the children's area. Kids enjoy special dishes while spending their time relaxing.



Camera marks are located at photospots in the park. At the Camera mark, photos can be taken with recommended angle during the time of Light-up. There are locations where the object is illuminated neatly.

